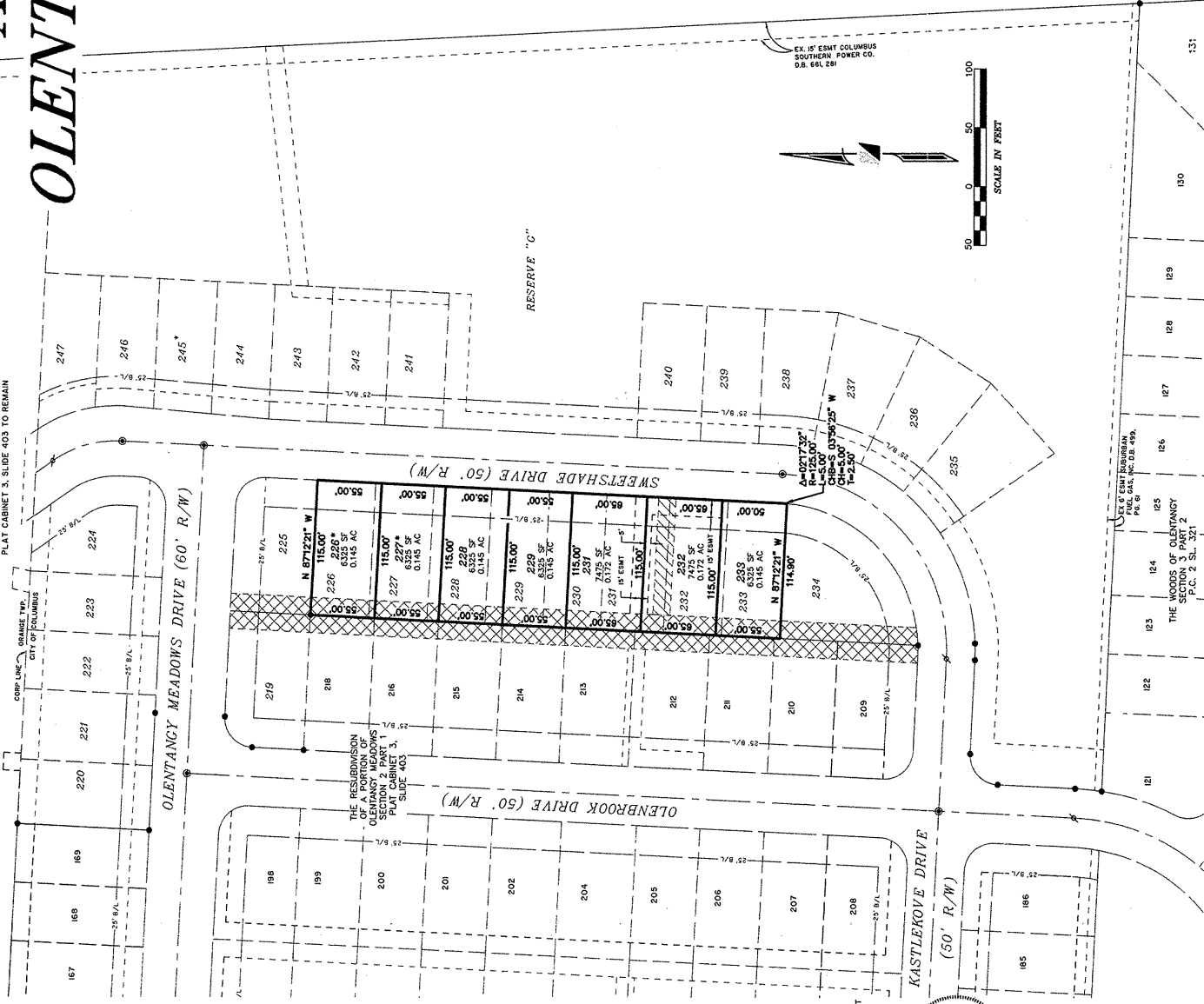
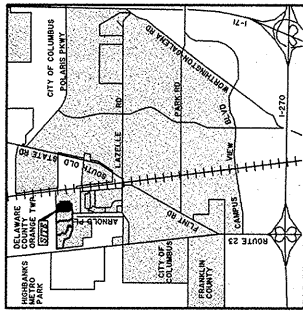


THE RESUBDIVISION OF A PORTION OF OLENTANGY MEADOWS SECTION 2 PART 2

LEGEND
763 * PREVIOUSLY PLATTED LOT NUMBERS, PLAT CABINET 3, SLIDE 403
199 * NEW LOT NUMBERS
* EXISTING EASEMENTS FROM PLAT CABINET 3, SLIDE 404 TO BE RELEASED
* EXISTING EASEMENTS FROM OLENTANGY MEADOWS SECTION 2 PART 1, RECORDED IN PLAT CABINET 3, SLIDE 403 TO REMAIN



SITUATE IN THE STATE OF OHIO, COUNTY OF DELAWARE, CITY OF COLUMBUS, LOTS IN FARM LOT 7, SECTION 3, TOWNSHIP 3, RANGE 18, UNITED STATES MILITARY DISTRICT, BEING A RESUBDIVISION OF LOTS 226 THROUGH 233 INCLUSIVE, OF OLENTANGY MEADOWS SECTION 2 PART 2, A RESUBDIVISION OF RECORD, IN PLAT CABINET 3, SLIDE 404, RECORDS OF THE RECORDERS OFFICE, DELAWARE COUNTY, OHIO.

DOMINION HOMES, INC., AN OHIO CORPORATION, BEING THE OWNER OF THE LAND PLATTED HEREIN, DOES HEREBY CERTIFY THAT THIS PLAT CORRECTLY REPRESENTS ITS "THE RESUBDIVISION OF A PORTION OF OLENTANGY MEADOWS, SECTION 2, PART 2" A RESUBDIVISION OF LOTS NUMBERED 226 THROUGH 229, INCLUSIVE, 231 THROUGH 233, INCLUSIVE, AND DOES HEREBY ACCEPT THIS PLAT OF SAME.

EASEMENTS ARE DEDICATED WHERE INDICATED ON THE PLAT FOR THE CONSTRUCTION, OPERATION, AND MAINTENANCE OF ALL PUBLIC AND PRIVATE UTILITIES, ABOVE AND BENEATH THE SURFACE OF THE GROUND, INCLUDING BUT NOT LIMITED TO, WATER, GAS, ELECTRICITY, TELEPHONE, CABLE TELEVISION, AND SERVICE CONNECTIONS TO ALL ADJACENT LOTS AND LINGS, AND FOR STORM WATER DRAINAGE.

IN ACCORDANCE WITH THE REQUIREMENTS AND TERMS OF SECTION 3023.08(C) (6) OF THE COLUMBUS CITY CODES, 1959, AS AMENDED BY ORDINANCE NUMBER 859-78, THERE IS HEREBY OFFERED AN EASEMENT TO THE CITY OF COLUMBUS, OHIO, FOR THE INSTALLATION AND MAINTENANCE OF CABLE AND EQUIPMENT. THIS OFFER IS HEREBY AUTOMATICALLY VOIDED IF THE CABLE COMPANIES DO NOT INSTALL THE CABLE AS SET FORTH IN THE ORDINANCE.

GRANTOR, DOMINION HOMES, INC., AN OHIO CORPORATION, WILL INDEMNIFY THE CITY OF COLUMBUS FOR ANY AND ALL DAMAGES, INCLUDING REASONABLE ATTORNEY'S FEES, THAT MAY BE INCURRED BY THE CITY AGAINST THE PROPERTY DEDICATED HEREIN RESULTING FROM GRANTORS CONVERSION OF THE PROPERTY FROM AGRICULTURAL USE.

IN WITNESS WHEREOF, DOMINION HOMES, INC., AN OHIO CORPORATION, HAS CAUSED THIS PLAT TO BE EXECUTED BY ITS DULY AUTHORIZED OFFICER THIS 17TH DAY OF JULY, 2007.

SIGNED AND ACKNOWLEDGED IN THE PRESENCE OF:
BY: *Joseph A. Sugar*
JOSEPH A. SUGAR, III
VICE PRESIDENT - LAND ACQUISITION

APPROVED AND ACCEPTED THIS 23RD DAY OF JULY, 2007, BY THE COUNCIL OF THE CITY OF COLUMBUS, OHIO.
IN WITNESS WHEREOF, I HAVE HEREUNTO SET MY HAND AND AFFIXED MY OFFICIAL SEAL THIS 23RD DAY OF JULY, 2007.

APPROVED THIS 17TH DAY OF JULY, 2007
APPROVED THIS 19TH DAY OF JULY, 2007
APPROVED THIS 22ND DAY OF JULY, 2007

FILED FOR RECORD THIS 3RD DAY OF AUGUST, 2007 AT 8:36A
FEE 40 FILE NO. 20071000-24950
RECORDED IN DELAWARE COUNTY, OHIO

RECORDED THIS 08TH DAY OF AUGUST, 2007 PLAT CABINET SLIDE 1
OR 800 Pg 655

NOTES:
1. INFORMATION HAS BEEN MADE BY THE BUILDING AND DEVELOPMENT SERVICES SECTION OF THE DEVELOPMENT DEPARTMENT, CITY OF COLUMBUS, AS TO WHETHER THE AREA PROPOSED TO BE PLATTED CONTAINS AREAS AS DESCRIBED IN SECTION 3023.08(C) OF THE COLUMBUS CITY CODES. ENGINEERS SHALL BE RESPONSIBLE FOR VERIFYING WHETHER THE WETLANDS EXIST ON THE SITE, CITY OF COLUMBUS APPROVAL OF THE RESUBDIVISION OF A PORTION OF OLENTANGY MEADOWS, SECTION 2, PART 2, MAY PERTAIN TO WETLANDS.

2. AT THE TIME THIS PLAT IS RECORDED, THE LAND INDICATED HEREIN IS SUBJECT TO REQUIREMENTS OF THE CITY OF COLUMBUS ZONING ORDINANCE 2042-03, PASSED 09/29/2003 (2003-0351), AND RESTRICTIONS AND CONDITIONS SET FORTH THEREIN. THIS ORDINANCE, AND ANY AMENDMENTS THEREON, SHALL APPLY TO THE DEVELOPMENT OF THE PROPERTY. ENGINEERS SHOULD BE RESPONSIBLE FOR VERIFYING THAT THE PROPERTY IS NOT AFFECTED BY THIS REGULATION, AT THE TIME THIS PLAT IS RECORDED, OF ZONING REGULATIONS APPLICABLE TO THE PROPERTY. THIS NOTICE SHALL NOT BE INTERPRETED AS CREATING A PLAT OR EASEMENT, OR AS A GUARANTEE OF THE ACCURACY OF THE INFORMATION ENCUMBRANCES OF ANY NATURE, AND IS FOR INFORMATION PURPOSES ONLY.

3. DEPRESSED DRIVEWAYS
SECTION 4123.43 OF THE COLUMBUS CITY CODE PROHIBITS DRIVEWAYS FROM BEING PLACED ON A DEPRESSION OR IN A DEPRESSION WITHIN 20 VERTICAL INCHES OF THE GROUND SURFACE OR WITHIN 20 HORIZONTAL INCHES OF THE GROUND SURFACE. IF A DEPRESSION DRIVEWAY IS PLANNED, BUILDER SHOULD VERIFY THAT THE DRIVEWAY IS NOT AFFECTED BY THIS REGULATION, AT THE TIME THIS PLAT IS RECORDED, OF ZONING REGULATIONS APPLICABLE TO THE PROPERTY. DEPRESSED DRIVEWAYS: 229 AND 227.

FLOOD ZONE:
THIS SITE LIES IN ZONE "X" AREA DETERMINED TO BE OUTSIDE THE 500 YEAR FLOOD PLAIN AS DETERMINED BY GRAPHIC INTERPOLATION FROM THE FLOOD PLAIN MAP OF THE CITY OF COLUMBUS, OHIO, DATED OCTOBER 19, 2000, AND DATE OF APRIL 21, 1999 PUBLISHED BY THE FEDERAL EMERGENCY MANAGEMENT AGENCY.

BASIS OF BEARINGS:
THE BEARINGS SHOWN HEREON ARE BASED ON THAT OF N 89°24'34" W FOR THE CENTERLINE OF LAZELLE ROAD, BETWEEN FRANKLIN COUNTY ENGINEERS MONUMENTS 004 AND 4450, AS DETERMINED BY GPS NETWORK OF FIELD OBSERVATIONS PERFORMED IN OCTOBER, 2000.

CERTIFICATION:
CERTIFICATE THAT WE HAVE SURVEYED THE ATTACHED PREMISES, PREPARED THE ATTACHED PLAT, AND THAT SAID PLAT IS CORRECT, ALL DIMENSIONS ARE SHOWN IN FEET AND DECIMAL PARTS THEREOF. DIMENSIONS PLACED UPON COMPLETION OF CONSTRUCTION NECESSARY TO THE IMPROVEMENT OF THIS LAND AND IS INDICATED BY THE FOLLOWING SYMBOLS:
* PERMANENT MARKER FOUND (SOLID ONE INCH IRON PIN)
* IRON PIN FOUND (5/8" INCH IRON PIPE, 30 INCHES IN LENGTH)
* MAG NAIL FOUND

R. D. ZANDE & ASSOCIATES, INC.
1600 LAKE SHORES DRIVE
COLUMBUS, OHIO 43204
(614) 861-3333
PREPARED BY: *R. D. Zande*
DATE: _____
PROFESSIONAL SURVEYOR NO. S-7743

STATE OF OHIO
DEPARTMENT OF REVENUE
REGISTERED PROFESSIONAL SURVEYOR
JERRY C. LEVALLY

200700024956
Filed for Record in
DELAWARE COUNTY, OHIO
ANDREW D BREHMER
08-03-2007 AT 08:36 am.
PLAT
OR Book 800 Page 655 - 655