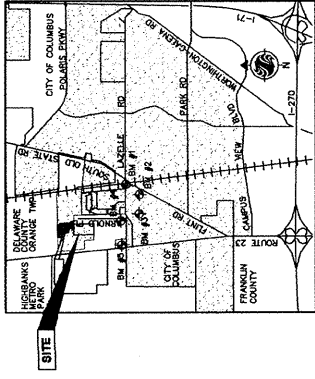


# FINAL PLAT OF OLENTANGY MEADOWS SOUTH



RESERVES AS PERMANENT AND DELEGATED EASEMENTS SHALL BE GRANTED AND MAINTAINED BY THE ASSOCIATION OF OWNERS OF THE FEESIMPLE TITLES TO LOTS IN OLENTANGY MEADOWS SOUTH AND ALL PREVIOUS AND SUBSEQUENT SECTIONS AND PARTS OF THIS OLENTANGY MEADOWS. IF THE HOMEOWNERS ASSOCIATION FAILS TO PERFORM ITS MAINTENANCE OBLIGATIONS AND IT BECOMES NECESSARY FOR THE CITY OF COLUMBUS TO PERFORM SUCH MAINTENANCE, THE CITY OF COLUMBUS SHALL BE ENTITLED TO RECOVER THE COSTS OF SUCH WORK.

NO DETERMINATION HAS BEEN MADE BY THE BUILDING AND DEVELOPMENT SERVICES SECTION OF THE DEVELOPMENT DEPARTMENT, CITY OF COLUMBUS, AS TO WHETHER THE AREA PROPOSED TO BE PLATTED CONFORMS WITH THE ZONING ORDINANCE OF THE CITY OF COLUMBUS. THE CITY OF COLUMBUS IS NOT RESPONSIBLE FOR THE DEVELOPER'S RESPONSIBILITY TO DETERMINE WHETHER WETLANDS EXIST ON THE SITE. CITY OF COLUMBUS APPROVAL OF THE FINAL PLAT OF OLENTANGY MEADOWS SOUTH IS NOT AN APPROVAL FOR THE DEVELOPMENT OF THE SITE AS IT MAY PERTAIN TO WETLANDS.

AT THE TIME THIS PLAT IS RECORDED, THE LAND INDICATED HEREIN IS SUBJECT TO THE CITY OF COLUMBUS ZONING ORDINANCE PASSED (2012-03-26), THIS ORDINANCE AND ANY AMENDMENTS THERETO PASSED SUBSEQUENT TO ADOPTION OF THIS PLAT, SHOULD BE REVIEWED TO DETERMINE THE THEN APPLICABLE ZONING REGULATIONS. THIS NOTICE IS SOLELY FOR THE PURPOSE OF NOTIFYING THE PUBLIC OF THE EXISTENCE AT THE TIME THE PLAT IS RECORDED, OF ZONING REGULATIONS APPLICABLE TO THE PROPERTY. THIS NOTICE SHALL NOT BE CONSTRUED AS AN ENDORSEMENT OF THE PROJECT OR AS A GUARANTEE AND OR TITLE ENCUMBRANCES OF ANY NATURE, AND IS FOR INFORMATION PURPOSES ONLY.

**OWNER AND SUBDIVIDER**  
DOMINION HOMES, INC.  
AN OHIO CORPORATION  
2.820 ACRES

**AREA CALCULATIONS:**  
LOT AREA = 2.820 ACRES

**FLOOD ZONE:**  
THIS SITE LIES IN ZONE "X" (AREA DETERMINED TO BE OUTSIDE THE 500 YEAR FLOOD PLAIN) AS DETERMINED BY GRAPHIC INTERPOLATION FROM THE FLOOD INSURANCE RATE MAP NUMBER 18207-0107A WITH AN EFFECTIVE DATE OF JUNE 11, 2008 PUBLISHED BY THE FEDERAL EMERGENCY MANAGEMENT AGENCY.

**BASIS OF BEARINGS:**  
THE BEARINGS SHOWN HEREON ARE BASED ON THE BEARING OF N 87°23'1" W, FOR THE CENTERLINE OF LAZELLE ROAD, BETWEEN FRANKLIN COUNTY ENGINEERS RECORDS 456 AND 457 AND AN INTERSECTION OF FIELD MEASUREMENTS MADE IN OCTOBER, 2008, (STATE PLANE COORDINATE SYSTEM, SOUTH ZONE, 1983 ADJUSTMENT).

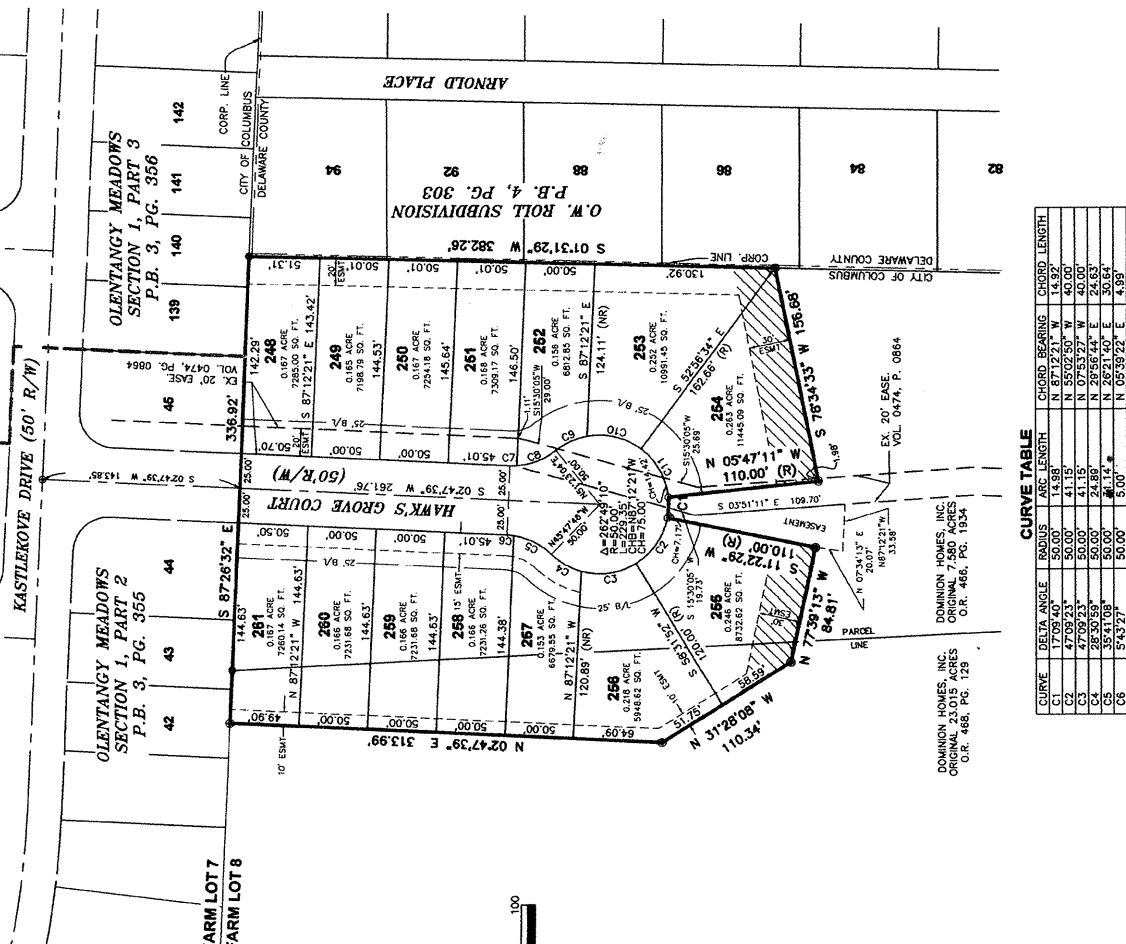
**CERTIFICATION:**  
WE DO HEREBY CERTIFY THAT WE HAVE SURVEYED THE ATTACHED PREMISES, PREPARED THE ATTACHED PLAT, AND THAT SAID PLAT IS CORRECT, ALL DIMENSIONS ARE SHOWN IN FEET AND DECIMAL PARTS THEREOF. THE INFORMATION CONTAINED HEREON IS SHOWN AS TRUTHFUL AND ACCURATE, AND THAT THE INFORMATION CONTAINED HEREON IS NECESSARY TO THE IMPROVEMENT OF THIS LAND AND IS INDICATED BY THE FOLLOWING SYMBOLS:

- PERMANENT MARKER SET (ALL PERMANENT MARKER ARE 1 INCH IRON RODS, 30 INCHES LONG, WITH A YELLOW CAP BEARING THE NAME OF THE SUBDIVIDER)
- PERMANENT MARKER FOUND
- IRON PIPE SET ARE 3/4 INCH IRON PIPES, 30 INCHES IN LENGTH, WITH A YELLOW CAP BEARING THE NAME "STANTEC"

**STANTEC CONSULTING SERVICES INC.**  
DATE: 02/14/13  
BY: [Signature]  
PROFESSIONAL SURVEYOR NO. 6-8853

**PREPARED BY:**  
1600 LAKES SHORE DRIFTS  
SUITE 100  
COLUMBUS, OHIO 43204  
(614) 466-4833 1-800-340-6743  
FAX (614) 466-4857

**Stantec**



CURVE	DELTA ANGLE	RADIUS	ARC LENGTH	CHORD	BEARING	CHORD LENGTH
C1	17.094.40°	50.00'	14.38'	14.32'	N 87°12'21" W	14.92'
C2	47.092.23°	50.00'	41.15'	40.00'	N 55°02'50" W	40.00'
C3	47.092.23°	50.00'	41.15'	40.00'	N 07°53'27" W	40.00'
C4	35.417.09°	50.00'	30.64'	30.64'	N 28°21'40" E	30.64'
C5	35.417.09°	50.00'	30.64'	30.64'	N 05°39'22" E	4.99'
C6	54.327.1°	50.00'	50.00'	50.00'	S 00°04'05" E	4.99'
C7	54.327.1°	50.00'	50.00'	50.00'	S 20°46'22" E	30.84'
C8	35.417.09°	50.00'	31.14'	30.84'	S 15°28'45" W	40.00'
C9	47.092.23°	50.00'	41.15'	40.00'	S 80°35'07" W	40.00'
C10	47.092.23°	50.00'	41.15'	40.00'	S 80°35'07" W	40.00'
C11	47.092.23°	50.00'	41.15'	40.00'	S 80°35'07" W	40.00'

**CONSERVATION/DRAINAGE EASEMENT:**  
THE DESIGNATED CONSERVATION/DRAINAGE EASEMENT ALONG THE NATURAL WATER COURSE IS THE INTENT OF THE EASEMENT TO KEEP THE FLOW OF THE WATER COURSE. IT IS THE INTENT OF THE EASEMENT TO KEEP THE FLOW OF THE WATER COURSE. IT IS THE INTENT OF THE EASEMENT TO KEEP THE FLOW OF THE WATER COURSE. IT IS THE INTENT OF THE EASEMENT TO KEEP THE FLOW OF THE WATER COURSE. IT IS THE INTENT OF THE EASEMENT TO KEEP THE FLOW OF THE WATER COURSE.